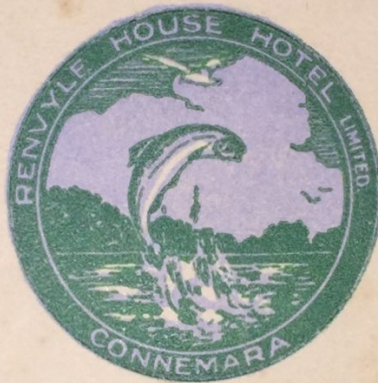


RENVYLE HOUSE HOTEL  
RENVYLE  
CO. GALWAY



*A First Class Modern Hotel in  
the beauty spot of Connemara*

*Most Health-giving and Restorative Climate*

SEA AND SURF BATHING

SANDS FOR CHILDREN. PONIES

SEA AND LAKE FISHING

SALMON AND WHITE TROUT

SHOOTING

BEAUTIFUL SCENERY

TENNIS COURTS



ELECTRIC LIGHT

CENTRAL HEATING

MODERN THROUGHOUT

DANCING FLOOR

HOTEL GARAGE

HOTEL MOTORS

Renvyle House Hotel  
Renvyle  
Co. Galway





RENVYLE HOUSE  
HOTEL





VIEW OF BEACH FROM  
TENNIS COURTS



**R**ENVYLE HOUSE HOTEL, situated at the foot of the Twelve Bens of Connemara, on the shore of the broad Atlantic, possesses the finest scenery in the West. A beautiful lake lies on one side a few yards from the hall door, and the ocean likewise at the back. The windows overlook mountain, sea and lake, and the sheer cliffs of Achill silhouetted in the distance. There are trout in the lake, and every size and sort of fish to be caught in the sea. Besides, shooting can be arranged on upwards of 40,000 preserved acres, and magnificent brown trout fishing on the teeming Tully Lough, where they never fail to rise. The famous Kylemore Salmon and White Trout Lakes which are attached to the Hotel, are within easy reach. There is deep-sea bathing and sandy beach-bathing for children. Ponies are kept for children. There is a large ballroom. The Manager has made every provision for the comfort of the guests; central heating, electric light, laundry, numerous bathrooms, and suites with bathrooms may be reserved. In contradistinction to hotels shut in valleys which are often relaxing, this Hotel, on the Atlantic edge, has the most invigorating climate in Ireland.

The Hotel is fully licensed, and the best Wines and Cigars are kept.



Renvyle House Hotel  
Renvyle,  
Co. Galway

TELEGRAMS: "Hotel, Renvyle."  
TELEPHONE: Renvyle 3.  
STATION: Clifden



# TARIFF

## BREAKFAST

*(Served from 8 a.m.)*

			<i>s.</i>	<i>d.</i>
Table d'Hôte Breakfast	/	/	4	0
Plain Breakfast	/	/	2	6

## LUNCHEON

*(Served from 1 p.m.)*

Table d'Hôte Luncheon	/		4	6
Cold Luncheon—from the Buffet	/		3	6

## AFTERNOON TEA

*(Served in the Lounge, 4 to 5 p.m.)*

Assorted Sandwiches, Preserves, etc.			2	0
--------------------------------------	--	--	---	---

## DINNER

*(Served from 7 p.m.)*

Table d'Hôte Dinner	/	/	6	0
<i>or</i>				
à la Carte Dinners from	/		7	6

NOTE.—*We specialise in Pure Food and Home-cooking. All*

*Table d'Hôte Meals are open to Non-residents.*

*The Hotel is fully licensed, and the best*

*Wines, Spirits, Liqueurs, etc.,*

*are stocked.*



## TARIFF

	<i>s.</i>	<i>d.</i>
Single Bedrooms / / / Per day, from	8	6
Single Bedrooms, and Private Bathroom „	15	0
Double Bedrooms / / / „	16	0
Double Bedrooms, and Private Bathroom „	22	6
Private Sitting Rooms / / „	15	6

NOTE.—The Manager will be pleased to quote Special Rates for Suites of rooms.

### INCLUSIVE TERMS

Summer Terms / / Per Person, per day, from	21	0
Winter Terms / / do.	15	0

### VISITORS' SERVANTS

Bedroom and Board in Servants' Quarter Per day	12	6
--	----	---

### FIRES

Sitting Room Fire, per day, 4*s.* Bedroom Evening Fire, 2*s.* 6*d.*

Early Morning Tea in Bedroom—6*d.*

Meals Served in Bedrooms:—

Breakfast and Luncheon, 6*d.* Dinner, 1*s.*

No reduction is made for temporary absence from meals or rooms.

*Please address all communications to the Manager.*



THE HOTEL occupies one of the finest country-hotel sites in Ireland—amid the many beauty spots of Connemara.

In every respect the Hotel is up-to-date. Special care has been expended upon schemes of decoration and furnishing, in order to secure the maximum of "home-like comfort."

The public rooms are well-appointed, and spacious. Personal attention to individual requirements is a feature of the establishment.

The present-day hotels of Ireland are becoming well known for their comfort and general efficiency; but the "Renvyle House Hotel" marks a noteworthy advance in accommodation "de luxe" at reasonable charges.

The Manager is most anxious that Guests should receive every attention. Any instance of inattention should be brought to the notice of the Management without delay.

Reasonable inclusive rates are quoted for Visitors intending to make a stay of one week upwards during the Winter months—October to March, inclusive.

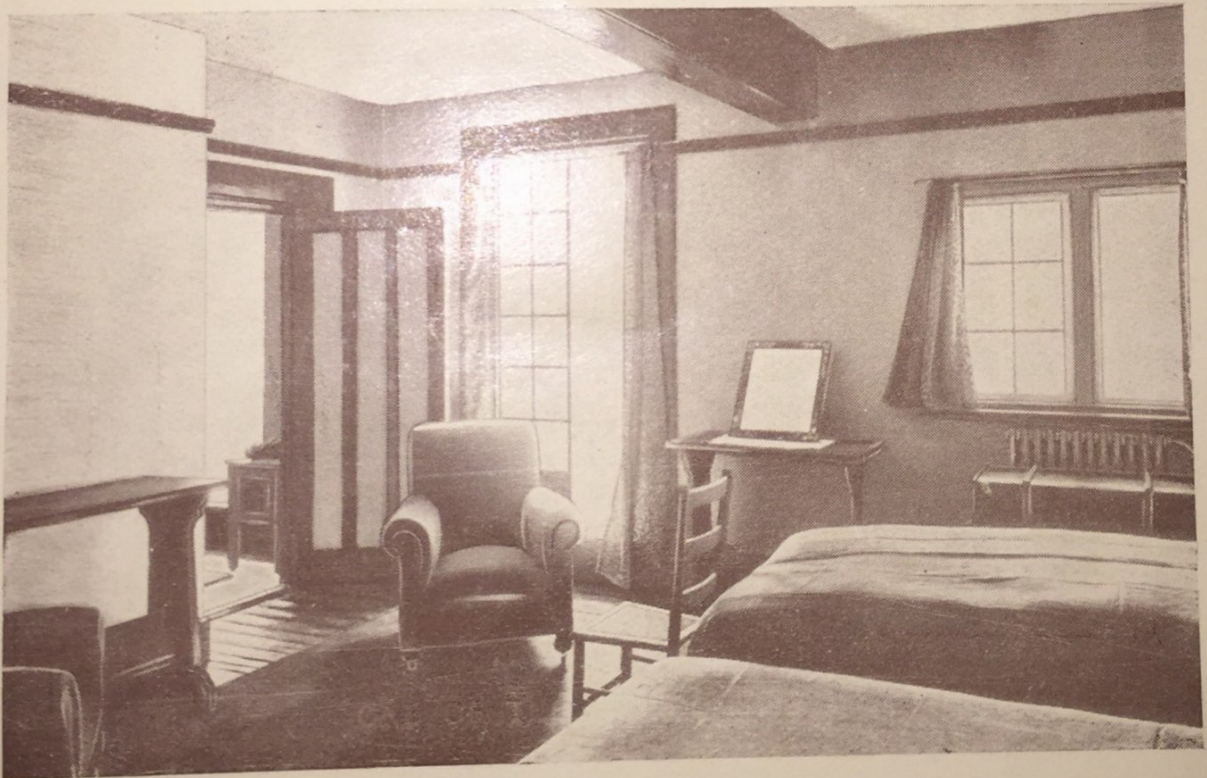
Visitors desirous of being met at Clifden Station by the Hotel Servants should kindly advise the Manager in advance. A comfortable car for this purpose is provided by the Hotel, at a nominal charge.

When engaging Rooms please state for how long required.



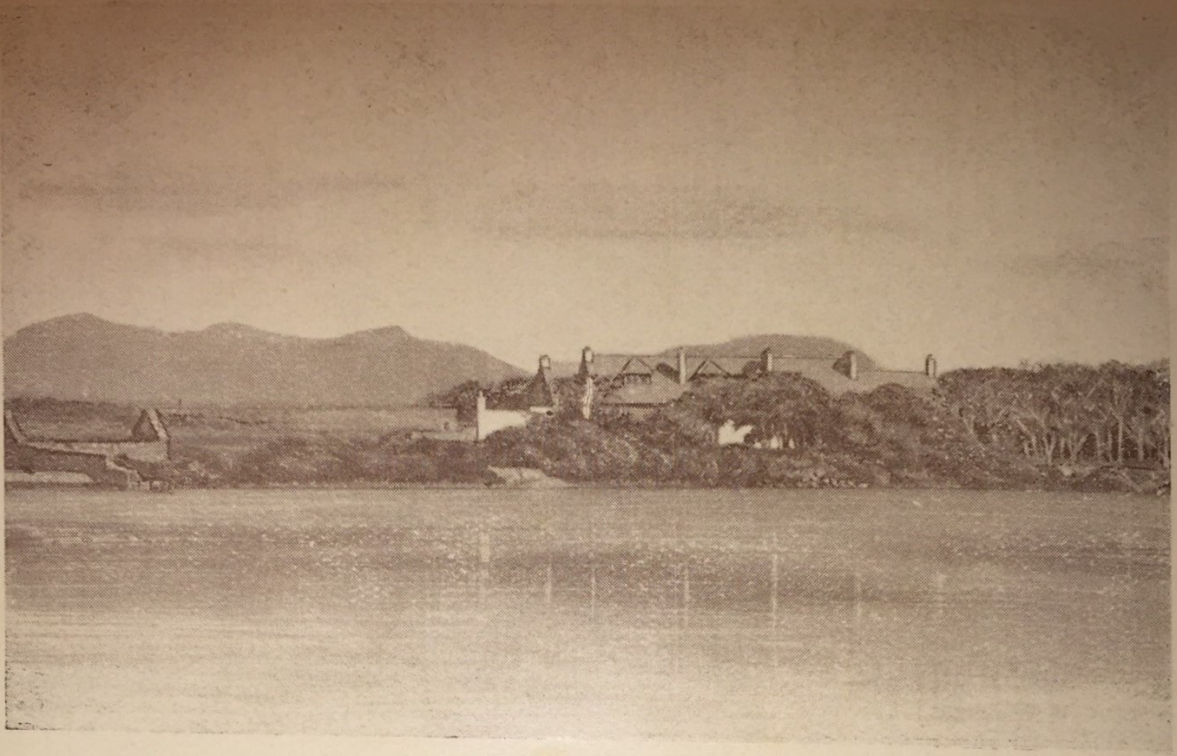


VIEW FROM BEDROOM WINDOW



ONE OF THE BEDROOMS





VIEW FROM RENVYLE LOUGH



THE LOUNGE



## DRIVES

1. To Salruck *via* the cliff scenery of Lettergesh past Lough Muck. At Salruck is the famous "pipe cemetery." In the valley to the right of the approach some specimens of holly and yew as remains of the original forest trees can be seen.
2. The drive may be continued past Lady Wilde's Island in Lough Fee to Assleigh, skirting the great ford of Killary Harbour; and from Assleigh turning westward along the opposite shore for Delphi and Dhulough.
3. Through Letterfrack and the Pass of Kylemore then south along Lough Inagh for Oughterard and Lough Corrib, where there is free fishing.
4. To Clifden for Ailbreach Golf Links.

## PREHISTORIC REMAINS

Promontory Fort at Knocknasheeogue Point, Burial Chamber at Ardnagreevagh. Burial Chamber at Tonadooravaun. The Fosse of Caheradoona. The Crannog, Wood Island, Tully Lake. The Pillar Stone in the Hotel grounds. The Hill Fort on a spur of Benchoona (400 feet up) commanding the Pass where the river joins Loughs Fee and Muck.

A car is provided by the Hotel for the use of Tourists at moderate charges.

Daily Restaurant Expresses run to and from Clifden and Dublin in connection with the L. M. S. Mail Steamers—Holyhead to Kingstown, and the British and Irish Steamships from Dublin (North Wall to Liverpool). The Irish Mail Train departs Euston (London) 8.30 a.m. and 8.50 p.m., daily. Leaving Euston 8.45 p.m. Renvyle may be reached at 2 p.m. next day.